



STREATTHAM

STREATTHAM

STREATTHAM

















1
W10

2
W8

3
W7

4
W11

5
W5

6
W6

7
W17

8
W9

9
W12

10
W13

11
W14

12
W15

13
W16

14
W18

15
W19

16
W20

17
W21

18
W22

19
W23

20
W24

21
W25

22
W26

23
W27

24
W28

25
W29

26
W30

27
W31

28
W32

29
W33

30
W34

31
W35

32
W36

33
W37

34
W38

35
W39

36
W40

37
W41

38
W42

39
W43

40
W44

41
W45

42
W46

43
W47

44
W48

45
W49

46
W50

47
W51

48
W52

49
W53

50
W54

51
W55

52
W56

53
W57

54
W58

55
W59

56
W60

57
W61

58
W62

59
W63

60
W64

61
W65

62
W66

63
W67

64
W68

65
W69

66
W70

67
W71

68
W72

69
W73

70
W74

71
W75

72
W76

73
W77

74
W78

75
W79

76
W80

77
W81

78
W82

79
W83

80
W84

81
W85

82
W86

83
W87

84
W88

85
W89

86
W90

87
W91

88
W92

89
W93

90
W94

91
W95

92
W96

93
W97

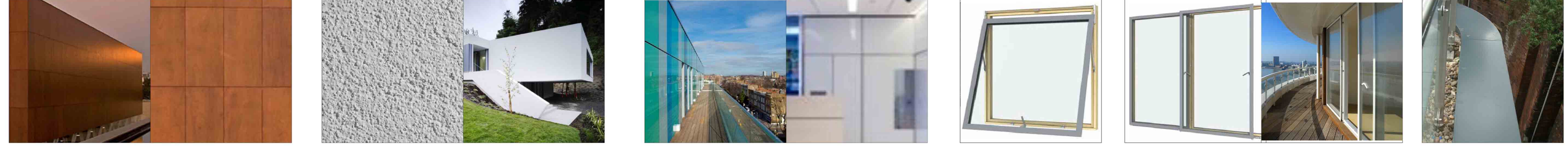
94
W98

95
W99

96
W100



MATERIALS



1 PARKLEX - COPPER FINISH
W10 AND W11A - High density stratified timber panel - UV protected

2 ACRYLIC RENDER - WHITE
W8 AND W8A - White siltace plaster, 2mm aggregate size, with self cleaning coating

3 STO VEROTEC RAIN SCREEN - WHITE GLASS FINISH
W27 - Back painted glass adhesively fixed to a carrier board

4 VELFAC 200 TILT AND TURN WINDOW
aluminium external and timber internal composite window

5 VELFAC 200 SLIDING WINDOW
PPC aluminium external and timber internal composite window

6 FLASHING
PPC aluminium pressing



7 SCHUCO FW50 SG GLAZING UNIT
POLYESTER POWDER COATED ALUMINIUM CURTAIN WALL WITH DRY GASKET

8 SCHUCO FW50 PLUS
W17, 17A, 17B - DOUBLE GLAZED POWDER COATED SCHUCO PRESSURE CAPPED DRAINED AND VENTILATED CURTAIN WALL

9 LIMESTONE RAINSCREEN HONED
W29 - Limestone Azul Botteg honed finish

10 LIMESTONE RS BUSH HAMMERED
Limestone Azul Botteg honed finish base pflth 300mm to be bush hammered

11 EUROPANEL
W4 - Polyester powder coated aluminium composite panel

12 FENCE WALL
W25 - Galvanised steel flat bar fence by onorgite

13 FENCE WALL
W14 - EYE TECH ANODIZED ALUMINIUM MESH

14 PPC ALUMINIUM LOUVRE
Polyester Powder coated louvre

15 GLASS BALUSTRADE
W12 - toughened and laminated baluster panel inter layer to be clear, edges polished, brushed stainless steel coping and clamp fixed to balcony or parapet

16 TIMBER FENCE WALL
W11

17 omitted



18 HANDRAIL
W15 - BRUSHED STAINLESS STEEL

19 BIKE STAND
BRUSHED STAINLESS STEEL

20 FRITTED GLASS

21 ZUIDTANGENT PAVER
TYPE B

22 ZUIDTANGENT PAVER
TYPE C

23 ZUIDTANGENT PAVER
TYPE D

24 ZUIDTANGENT PAVER
TYPE E

25 ZUIDTANGENT PAVER
FB7C/D/F/G/H

26 PRECAST CONCRETE PLANTER
FB14 - TYPE C FINISH

NOTE:
CGI VIEWS INDICATIVE ONLY, ALL SUBMITTED DWGS TAKE PRECEDENCE

Unspecified dimensions are not to be based off this drawing, if dimensions or details on these drawings conflict with other drawing information precedence shall be given to the larger scale drawing. Where the drawing relates to existing buildings or completed construction the contractor is responsible for checking that there is no conflict between actual building dimensions and drawing dimensions. In the event of discrepancies between this drawing and subcontractor's working drawings for relevant building components, the subcontractor's drawing shall take precedence. Any conflicts arising out of information as noted above must be reported immediately to Michael Aukett Architects. This drawing is the copyright of Michael Aukett Architects and it is forbidden to reproduce this drawing in part or full without written permission. All dimensions are in millimetres unless otherwise stated.

MICHAEL AUKETT ARCHITECTS
Atlantic Court, 77 Kings Road, London SW3 4NX
Tel: 020 7376 7525 Fax: 020 7376 5773

Client: TESCO STORES LTD

Project: STREATHAM HUB

Title: MATERIALS PANEL 2

Scale: N.T.S. A0 Date:

Issue Status:

PLANNING
Stages C-D (Design)

By: CMB
Checked: NR
Date: 24.11.11 Time: 14:56

Drawing Number: M1004/1065 P1 Rev: